

SC90® Trex® PLATFORM

The SC90® Trex® Platform is just like all other Staging Concepts SC90 platforms, except the platform insert is manufactured by our parent company, Trex® Decking. Its strength and durability aligns with the top quality products you've come to learn and trust from Staging Concepts. More specifically, the SC90 Trex Platform features the Enhance® Composite Decking which is made from recycled materials, such as sawdust, plastic packaging, and reclaimed wood. This composite provides the appearance of a clean, wood finish without the maintenance. For instance, this platform is resistant to fade, stain, mold, and mildew, and can easily be cleaned with soap and water. The standard 4' x 8' deck can hold up to 150 lbs. per square foot. Multiple decks can be locked together with the same Roto-Locks used in all other Staging Concepts' SC90 platforms.

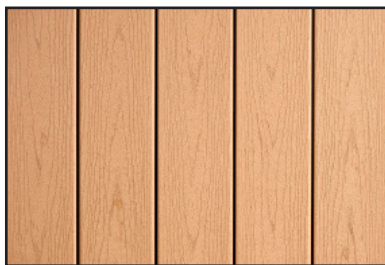


ABOUT TREX® ENHANCE

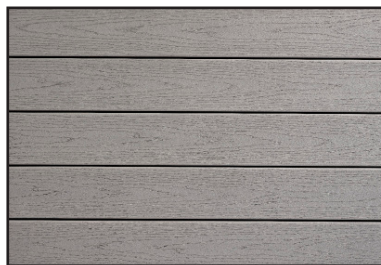
Trex® Enhance is a low-maintenance, high-performance composite that offers all the charm and none of the trouble of real wood. With its high-definition grain pattern and classic color options, Enhance features a rich, sophisticated finish at a value that only adds to its appeal.



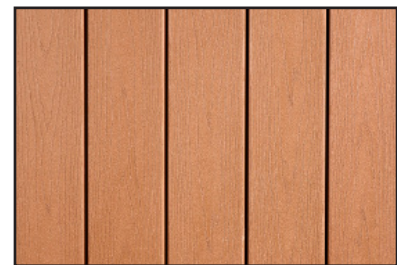
AVAILABLE COLORS (More colors available upon request.)



BEACH DUNE



CLAM SHELL



SADDLE



We elevate all people's abilities to safely access and enjoy amazing life experiences.

8400 Wyoming Avenue N · Suite 100 · Minneapolis, MN 55445 · www.stagingconcepts.com · 763.533.2094

ADVANTAGES

Strength

- Constructed of recycled wood, plastic, and sawdust.
- Engineered to support 150 lbs/sq ft.
- Top locking Roto-Locks provide monolithic floor when platforms are locked together.

Durability & Efficiency

- Low maintenance, high performance deck is resistant to fade, stain, mold, and mildew.
- Compatible with all Trex Railing.

Convenience

- Easily clean with soap and water or a pressure water.
- Spft, splinter-free finish.
- Features Trex Hideaway® Hidden Fasteners so there are no visible screws on top.
- Variety
 - Multiple surface options available: Beach Dune, Clam Shell, and Saddle. (More colors available upon request.)
 - Decking can run either the long way or the short way of the platform.

TECHNICAL SPECIFICATIONS

The SC90 Trex Platform is a single-sided, outdoor, weather-resistant, portable platform.

Platform is designed to be fully field repairable, to function with all of Staging Concepts' supports, and to comply with the following:

- Edging: 4" (101.6 mm) high, extruded 6005A-T61 aluminum frame, including protective edge, mill finish. Design frame to accept:

- Built-in Roto-Lock system
- Structural locking clip system
- Guardrails
- Chair stops
- Closure panels
- Step units
- Skirting clips

- Platform extrusion accessory grooves are compatible with leading manufacturer's channel nuts for alternate attachment methods.

DIMENSIONS, WEIGHTS, AND FINISH OPTIONS

4' x 8' (1.22 m x 2.44 m) (lbs/kg)

3 Beams (Long Way)	259/117.5
5 Beams (Short Way)	237/107.5

4' x 6' (1.22 m x 1.83 m) (lbs/kg)

3 Beams (Long Way)	205/92.9
4 Beams (Short Way)	190/86.2

4' x 4' (1.22 m x 1.22 m) (lbs/kg)

2 Beams	130/58.9
---------	----------

3' x 8' (0.92 m x 2.44 m) (lbs/kg)

2 Beams (Long Way)	189/85.7
5 Beams (Short Way)	194/87.9

3' x 6' (0.92 m x 1.83 m) (lbs/kg)

2 Beams (Long Way)	142/64.4
4 Beams (Short Way)	157/71.2

3' x 4' (0.92 m x 1.22 m) (lbs/kg)

2 Beams	98/44.5
---------	---------

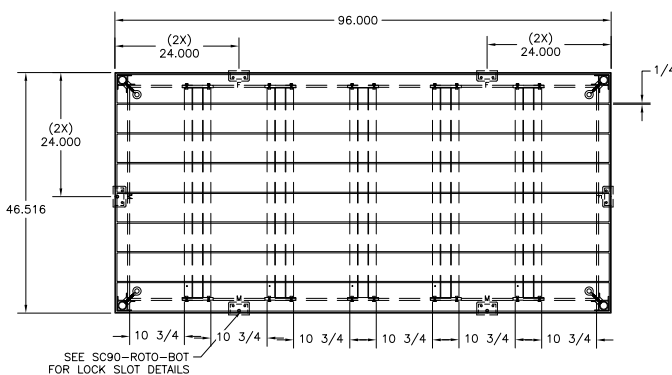
3' x 3' (0.92 m x 0.92 m) (lbs/kg)

1 Beam	72.3/32.8
--------	-----------

Aluminum Frame Options:

Mill finish; Powder coat finish (black or silver); Anodized finish (black or clear)

SC90 TREX PLATFORM SCHEMATICS



Panels - Length of the Deck

Panels - Width of the Deck

