

SC90® PLATFORM

The SC90® Platform is the cornerstone of Staging Concepts' equipment line. This single-sided, portable platform is well-known throughout multiple markets for its strength, versatility, and durability. SC90 platforms are constructed of marine grade plywood and are intended for interior use or temporary use outdoors protected from rainfall and direct sunlight. The semi-permanent platform features a patented aluminum extruded frame and with the plywood's aluminum backer, the backer provides a Class A fire rating. It is recommended to store these platforms in an indoor temperature-controlled environment when not in use to prolong the use of the platforms. To also help prolong the usability and lifespan of the SC90 platform, these platforms should not be power washed or introduced to water.

SC90 platforms are weather-resistant and are available in standard and custom sizes. Standard sizes include 4' x 8' (1.22m x 2.44m), 4' x 6' (1.22m x 1.83m), 4' x 4' (1.22m x 1.22m), 3' x 8' (.91m x 2.44m), 3' x 6' (.91m x 1.83m) and 2' x 8' (.61m x 2.44m). The standard 4'x8' platforms will support 150 psf. of uniformly distributed live load. A full line of accessories is available for the portable stage decks and elevated platform risers, as well as multiple surface options.

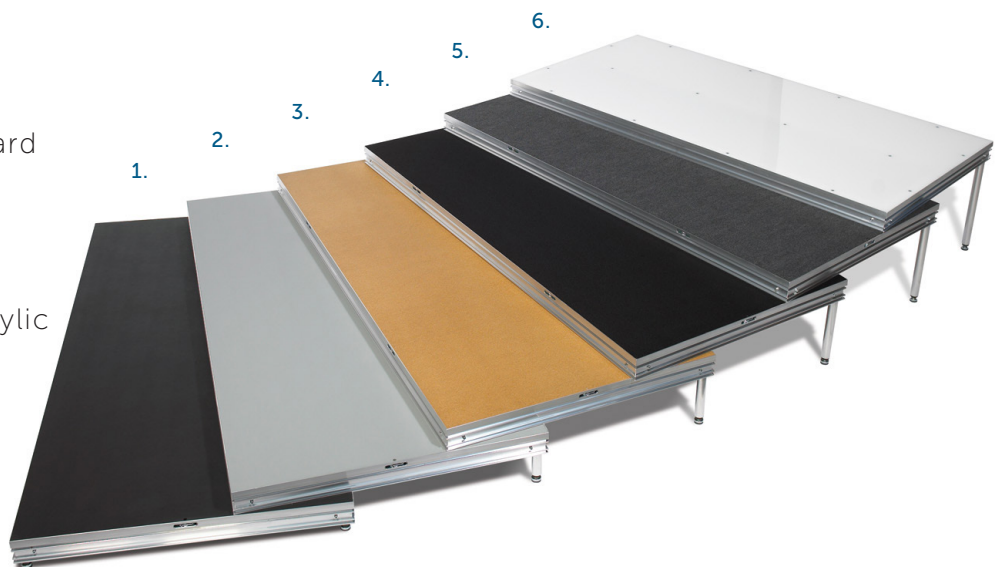


Platforms/Decks are available in the following surface options:



SC90 Underside's
Optional Leg
Storage

1. HDPE – black
2. HDPE – gray
3. Plyron – tempered hardboard
4. Carpet – black
5. Carpet – gray
6. Acrylic – opaque (clear acrylic also available)



ADVANTAGES

Strength

- Constructed with 1" (25 mm) thick exterior rated plywood substrate containing virtually zero voids.
- Engineered to support 150 lbs/square foot of uniformly distributed live load.
- Class A fire rating provided by aluminum skin backer on platforms with HDPE surface.
- Top locking Roto-Locks provide monolithic floor when platforms are locked together.

Durability & Efficiency

- Platform only needs support in four corners for quick setup.
- Patented aluminum extrusion allows for guardrails, step units, closure panels, chair stops, and skirting clip attachment, with no loose parts.
- Platforms easily handled by two people.
- For use with all of Staging Concepts' supports.

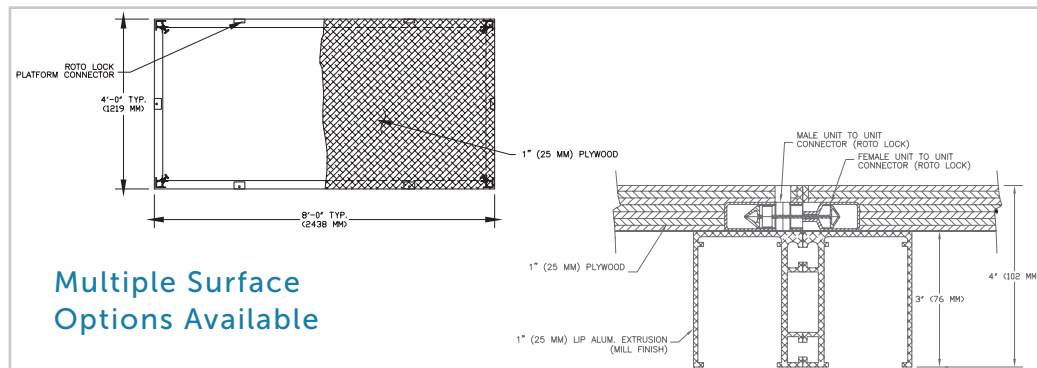
Variety

- Multiple surface options available: HDPE (black or gray), commercial grade carpet (black or gray), unfinished plywood, painted plywood (black), Plyron (tempered hardboard), acrylic (clear or opaque)

Field Repairability

- For those unavoidable accidents, repair/replace only damaged part of platform (surface, lid, side of extrusion, corner piece, etc.); no need to replace entire platform. Ability to repair on site.

SC90 PLATFORM SCHEMATICS



Multiple Surface Options Available

TECHNICAL SPECIFICATIONS

The SC90 Platform is a single sided, portable platform. It is designed to be fully field repairable, function with all of Staging Concepts' supports, and to comply with the following:

- Edging: 4" (101.6 mm) high, extruded 6005A-T61 aluminum frame, including protective edge, mill finish. Design frame to accept:
 - Built-in Roto-Lock system
 - Structural locking clip system
 - Guardrails
 - Chair stops
 - Closure panels
 - Step units
 - Skirting clips
- Subfloor: 1" (25.4 mm) exterior rated, group 1 plywood.
 - Finished surface: HDPE (black or gray), commercial grade carpet (black or gray), unfinished plywood, painted plywood (black), Plyron (tempered hardboard), acrylic (clear or opaque)
 - Tongue and groove hardwood surface available upon request (specify wood species)
- Platform will support 150 lbs/square foot of uniformly distributed live load.
- Platform is weather-resistant and intended for interior use of temporary use outdoors protected from rainfall and direct sunlight.
- Platform extrusion accessory grooves are compatible with leading manufacturer's channel nuts for alternate attachment methods.

DIMENSIONS, WEIGHTS, AND FINISH OPTIONS

4' x 8' (1.22 m x 2.44 m) (lbs/kg)

HDPE Surface (black or gray)	141/64
Carpet Surface (black or gray)	141/64
Unfinished Plywood Surface	141/64
Painted Plywood Surface	141/64
Plyron Surface	158/71.7
Acrylic Surface	245/111.1

4' x 6' (1.22 m x 1.83 m) (lbs/kg)

HDPE Surface (black or gray)	110/49.9
Carpet Surface (black or gray)	110/49.9
Unfinished Plywood Surface	110/49.9
Painted Plywood Surface	110/49.9
Plyron Surface	122/55.3
Acrylic Surface	235/106.6

4' x 4' (1.22 m x 1.22 m) (lbs/kg)

HDPE Surface (black or gray)	78/35.4
Carpet Surface (black or gray)	78/35.4
Unfinished Plywood Surface	78/35.4
Painted Plywood Surface	78/35.4
Plyron Surface	86/349
Acrylic Surface	133/60.3

3' x 8' (0.92 m x 2.44 m) (lbs/kg)

HDPE Surface (black or gray)	111/50.3
Carpet Surface (black or gray)	111/50.3
Unfinished Plywood Surface	111/50.3
Painted Plywood Surface	111/50.3
Plyron Surface	125/56.7
Acrylic Surface	190/86.2

3' x 6' (0.92 m x 1.83 m) (lbs/kg)

HDPE Surface (black or gray)	86/39
Carpet Surface (black or gray)	86/39
Unfinished Plywood Surface	86/39
Painted Plywood Surface	86/39
Plyron Surface	97/44
Acrylic Surface	151/68.5

2' x 8' (0.61 m x 2.44 m) (lbs/kg)

HDPE Surface (black or gray)	83/37.6
Carpet Surface (black or gray)	83/37.6
Unfinished Plywood Surface	83/37.6
Painted Plywood Surface	83/37.6
Plyron Surface	93/342.2
Acrylic Surface	128/58.1

3.28' x 6.56' (1 m x 2 m) (lbs/kg)

HDPE Surface (black or gray)	99/44.9
Carpet Surface (black or gray)	99/44.9
Unfinished Plywood Surface	99/44.9
Painted Plywood Surface	99/44.9
Plyron Surface	112/50.8
Acrylic Surface	177/80.3

*Custom sizes and surfaces are available upon request

Aluminum Frame Options:

Mill finish, Powder coat finish (black or silver), Anodized finish (black or clear)