

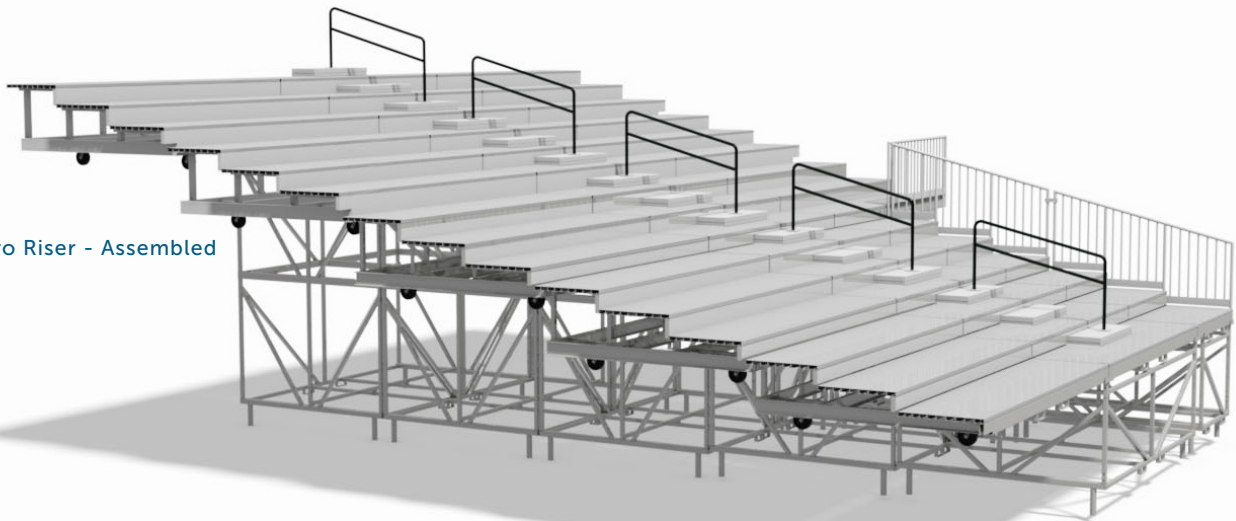
# SC PRO RISER

The Staging Concepts Pro Riser is the latest solution for large scale, demountable seating risers. Highly customizable, the Pro Riser is meant to yield additional seating capacity for venues, without increasing setup difficulty. This product is designed to fit into tight, venue-specific storage areas, but also achieves a sturdy and permanent quality that allows your patrons to feel as though they are standing on solid ground.

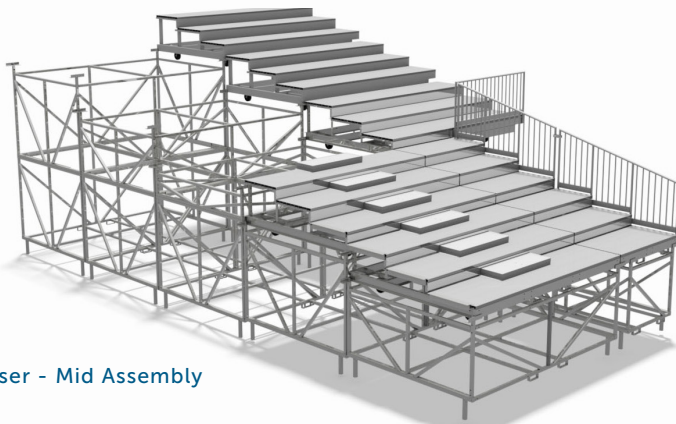
With towers that combine both bridging from left to right and front to back, this caster-mounted product is long-lasting and transportable. Optional accessories include step units, handrails, guardrails, field walls and padding, camera or video platforms, and wind load anchors.

Leveling feet ensure that the rise of the product matches the adjacent concrete, allowing the riser to adapt to any unique area or space. Typical Pro Risers include an aluminum plank top surface and mounted seats. The SC Pro Riser is conveniently compatible with any type of seating you choose for your venue, and is highly adaptable to match the look and feel of your space. To ensure maximum comfort, this product features an aluminum closure for the back of seats to allow for the utmost enhanced patron experience.

Pro Riser - Assembled



Pro Riser - Mid Assembly



Our team of sales professionals and design engineers stand ready to help you increase seating capacity in ways that create an attractive ROI. We can assist with a sightline study, storage space analysis, and a full engineering review of your flexible seating riser system.